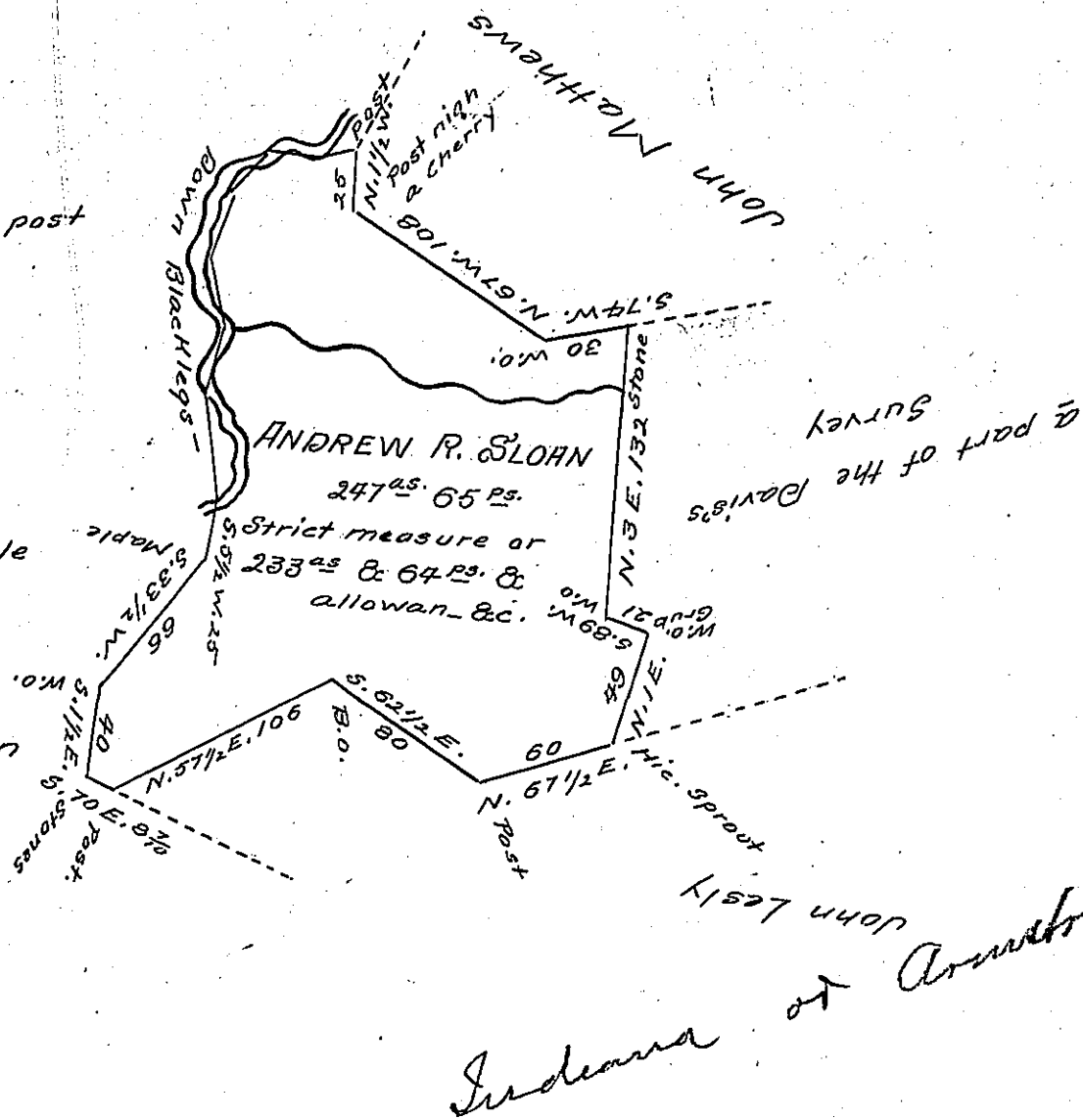


Courses & distances
down the Creek from the post

- S. 72 1/2 W. 18
- S. 83 1/2 W. 22
- S. 33 1/2 W. 20
- S. 13 1/2 W. 36
- S. 19 1/2 E. 30
- S. 5 1/2 W. 28
- S. 9 1/2 E. 44
- S. 5 1/2 W. 6 to Creek
- & 25 perches to Maple



1st 2nd & 3rd days of November A.D. 1849 Surveyed for Andrew Sloan the above described piece of land containing Two hundred and forty seven acres & Sixty five perches S. M. it being a part of a larger tract originally surveyed 8th of May 1786, By virtue of a warrant granted to Thomas Davis, William Davis & David Davis, 25th of February 1786

Robert McGee D.S.

I approve of the above survey

August 5th 1854

Thompson McGree C.S.

IN TESTIMONY that the above is a copy of the original remaining on file in the Department of Internal Affairs of Pennsylvania, made conformably to an Act of Assembly approved the 16th day of February, 1833, I have hereunto set my Hand and caused the Seal of said Department to be affixed at Harrisburg, this Nineteenth day of August 1904

Asa R. Brown
Secretary of Internal Affairs.